



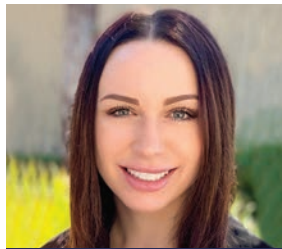
MOLLY AMENDT

Senior Engineer
City of Carlsbad



VANESSA BOLLES

Senior Project Manager
Latitude 33 Planning & Engineering



**GILLIAN CARZZARELLA
DEAN**

Senior Engineer
NOVA Services, Inc.



SHIRLEY DEESE

President Emeritus
National Society of Black Engineers -
San Diego Professional



ALEXANDRA DUNCAN

Senior Engineering Project Manager
Stok



LAUREN FERRELL, P.E.

Associate Engineer City of Carlsbad / Chair
ASCE California Infrastructure Symposium
City of Carlsbad / American Society of
Civil Engineers



PAZ GOMEZ

Deputy City Manager, Public Works
City of Carlsbad



CANDACE L. GRAY

Production Engineering Manager
ASML



CLAUDIA GUTIERREZ

Engineer
Turner Construction Company



HARMONY HODGES

Engineer
Turner Construction Company



KELLY HON

Sr. R&D Manager
Becton Dickinson



REBECCA HYNES

Manager of Integrated Logistics
Services
General Dynamics NASSCO



MARY "DR. MIMI" ISAAC

Program Director/SWE Fellow
AAUW California Tech Trek & SWE



XUN JIA

Director of Engineering
Stok



DEBRA KIMBERLING

President
San Diego County Engineering
Council



SHERRY KIRKPATRICK

President & CEO
SRK Engineering, Inc.



KATHLEEN A. KRAMER, PH.D.

Professor of Electrical Engineering
University of San Diego - Shiley
Marcos School of Engineering



JACQUI LE

Project Manager/Engineer
KPFF Consulting Engineers



VIRGINIA LU

Director, Advanced Technology
Development
Tandem Diabetes Care



KAREN MAY-NEWMAN

Executive Director for STEM
Teaching, Learning and Innovation
San Diego State University



JENNA METERA

Chair
American Society of Materials San
Diego Chapter



DR. TRACY NGUYEN

SWE San Diego Vice President/
Doctor of Optometry
Society of Women Engineers/Essential
Eyecare Optometry



LAMIA N. PORTER

Lead Estimator
Sundt Construction



SORAYA PURDY

Project Engineer
Turner Construction Company



DANIELLE RICHTERKESSING

Director, Global Product
Development at NuVasive
NuVasive



JUSTINA A. SANCHEZ

Quality Engineer
TÜV SÜD America Inc.



**MELISSA STAYNER, PG,
CEG**

Senior Engineering Geologist
NOVA Services, Inc.



ELIZABETH SUAREZ

Project Manager
Turner Construction Company



DR. JULIA TAYLOR

President
Taylor Success Systems



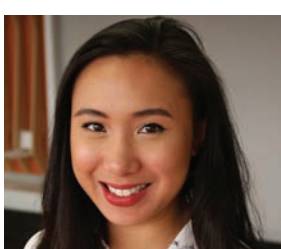
CECILY TAYLOR

Senior Transportation Planner
San Diego Association of
Governments (SANDAG)



MICHELLE THOMPSON

CEO
Open Research Institute, Inc.



**VANESSA TOLENTINO-
TARRONAS ESLAVA**

Transportation Engineer TYLIN, Director
American Society of Civil Engineers
TYLIN, American Society of Civil Engineers



AMY LYNN WILLIAMS, PE

Water Resources Engineer
Dudek



LOIS YU

Associate Director
The Aerospace Corporation



KATHARINE ZIMMERMAN

Supervisor Engineering
General Dynamics NASSCO

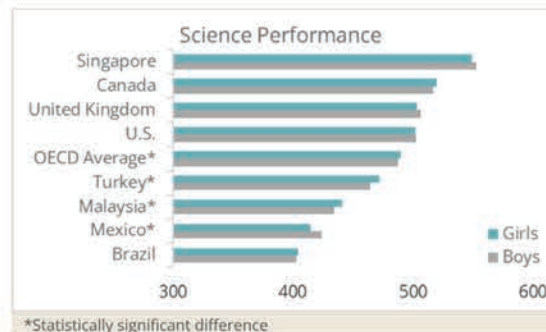
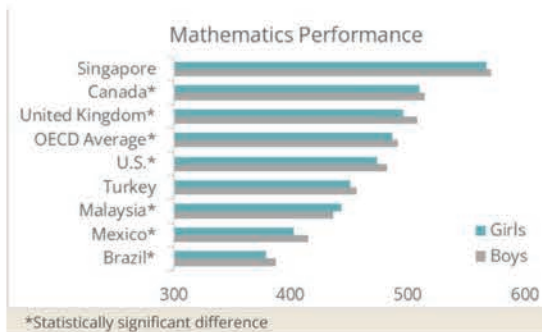


LAURA ZUILL, PE

Senior Engineer, Civil Engineering
Coffman Engineers, Inc.

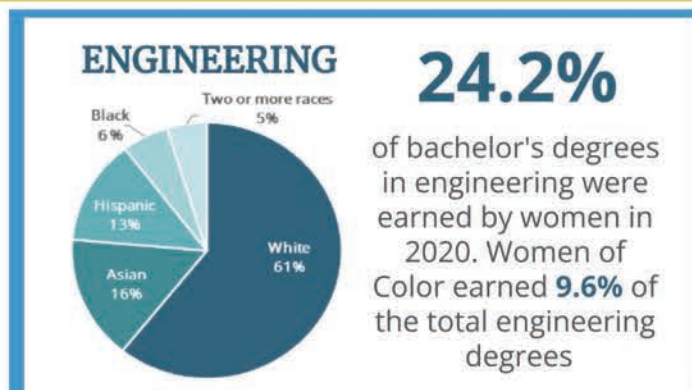
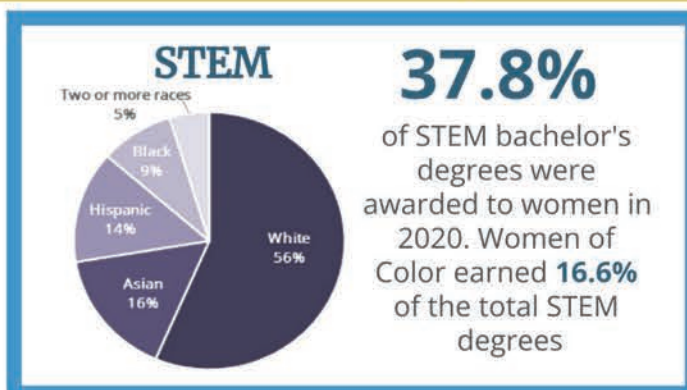


Global Math and Science Performance



PISA measures 15-year-old students' abilities to think critically and apply knowledge. The 2018 results indicated boys outperform girls in mathematics by an average of 5 points. In Malaysia, the opposite occurred; girls outperformed boys by 7 points. In science, girls outperformed boys by an average of 2 points. In Turkey and Malaysia, girls scored more than 6 points higher than boys.

STEM and Engineering Degrees Awarded to Women



IN 2020 WOMEN RECEIVED:

27,700 Bachelor's
6,191 Master's
1,204 Doctoral

DEGREES IN ENGINEERING

Note: Degrees awarded in the 2019-2020 academic year

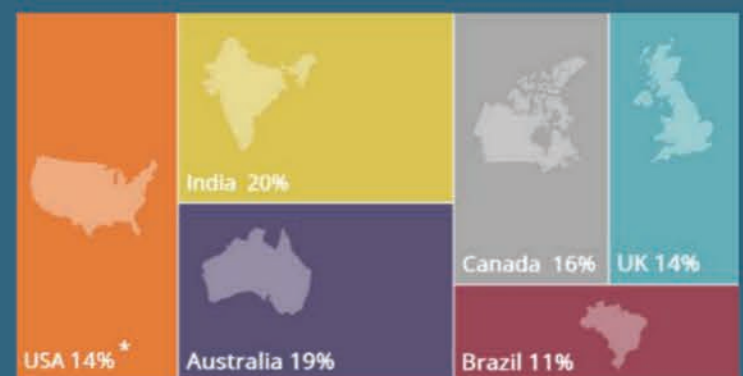
Top 10 Engineering Degrees Awarded to Women: 2020

1 Mechanical Engineering	6 Industrial/Manufacturing/Systems Eng.
2 Computer Science	7 Electrical Engineering
3 Chemical Engineering	8 Computer Engineering
4 Biomedical Engineering	9 Electrical/Computer Engineering
5 Civil Engineering	10 Aerospace Engineering

Society of Women Engineers

A Champion of Women Engineers for over 70 Years

Women in the Engineering Workforce



15% of the global engineering workforce was comprised of women in 2020.



Discover the social science research on women in STEM at swe.org/research in the **SWE State of Women in Engineering** with the engineering workplace studies including: earnings gap, retention, workplace culture, gender and racial bias, intervention strategies, re-entry programs, employment and job outlooks.

Sign up for the Women of Color in Engineering Collaborative newsletter!





MOLLY AMENDT
 Senior Engineer
 City of Carlsbad

Molly Amendt is a Senior Engineer in the Public Works Department of the City of Carlsbad. In her role, she manages facilities projects ranging from building renovations to new electric vehicle charging infrastructure. Her extensive experience overseeing projects from early planning, through construction and operations is valuable to the city and its role in prioritizing new projects and maintaining aging infrastructure. Amendt has civil engineering degrees from California Polytechnic State University, San Luis Obispo and San Diego State University. After more than 13 years as an engineer, project manager, and program manager at San Diego Gas & Electric, Amendt joined the start-up consulting firm Conket2, Inc. to help develop their Engineering Division manage complex projects in and outside of California. Amendt came back to the owner's side of her experience, joining Carlsbad, and supporting local projects.



VANESSA BOLLES
 Senior Project Manager
 Latitude 33 Planning & Engineering

Vanessa Bolles, senior project manager at Latitude 33 Planning & Engineering, is a leader on the region's significant developments. She specializes in managing site, utility and storm water design with complex timelines for large-scale, phased developments. Projects that Bolles has worked on include the \$3.4 billion new Terminal 1 at San Diego International Airport, UC San Diego's One Mesa housing development, and UC San Diego's 332,000-square-foot Triton Pavilion. She earned a bachelor's degree in civil engineering from San Diego State University, where she helped lead Engineers Without Borders, a nonprofit that partners with developing communities worldwide to improve their quality of life. She also serves as a mentor at Latitude 33 and has served on the board of directors for Forever Balboa Park. She can be reached at 858-875-1737.



GILLIAN CARZZARELLA DEAN
 Senior Engineer
 NOVA Services, Inc.

Gillian Carzzarella Dean, PE is a Senior Engineer at NOVA Services, Inc. She has 11 years of experience in the industry and is a licensed Professional Engineer in California. She has developed and maintained numerous relationships with clients and prioritizes client satisfaction. Among her high-profile projects are the San Diego International Airport Terminal 1 Parking Plaza and several projects at UC San Diego including the Multidisciplinary Life Sciences Building, Franklin Antonio Hall, and Central Plant Expansion/Chiller Addition. She was also part of the Hurricane Sandy Disaster Relief effort in 2012, performing home inspections in Queens and Staten Island and making inspections of several beach boardwalks. Gillian is experienced in all stages of geotechnical design and oversight of geotechnical construction and has a passion for mentoring and teaching younger staff. She can be reached at gdean@usa-nova.com.



SHIRLEY DEESE
 Chair

National Society of Black Engineers - San Diego Professionals Advisory Board

Shirley Deese is Chair of the National Society of Black Engineers (NSBE) San Diego Professionals Advisory Board. She has served NSBE at the society and chapter for decades to promote and champion their mission "to increase the number of culturally responsible black engineers who excel academically, succeed professionally and positively impact the community." She implemented a professional development program within the chapter which won the national award within the NSBE organization. This year, Deese was STE(A)M Speaker at the National Council of Negro Women Workshop. She is also a leader in the community engaging in several nonprofit organizations as a member and advocate including the Society of Women Engineers, American Society of Quality Engineers, Tau Beta Pi Engineering Honor Society. She can be reached at shdeese@gmail.com or 310-505-4413.



ALEXANDRA DUNCAN
 Senior Engineering Project Manager
 Stok

Alexandra Duncan is Senior Engineering Project Manager at Stok. With 15 years of experience, she brings a breadth of expertise from data analysis, portfolio decarbonization strategy, and commissioning while drawing insights from her experiences as an owner, engineer, and boutique energy consultant. She has a proven passion for analyzing data and collaborating with all stakeholders to maximize progress toward carbon goals for San Diego and across global portfolios. Drawing on unique insights from her past experiences as an owner, engineer, and niche energy consultant for the U.S. Department of Energy, Duncan comprehensively supports her clients in achievement of the newest climate mandate of rapidly decarbonizing the built environment. She has also shared best practices and innovations at flagship sustainable engineering conferences, including Greenbuild, AEE West, and Biocom. She can be reached at ally@stok.com.



LAUREN FERRELL, P.E.

Associate Engineer City of Carlsbad / Chair ASCE California Infrastructure Symposium City of Carlsbad/ American Society of Civil Engineers

Ferrell is Associate Engineer for the City of Carlsbad. She is a capital improvement project manager with extensive experience leading engineering projects from concept to completion in the public and private sectors. With 15 years of transportation and storm water experience, she navigates complex regulations and stakeholder needs to deliver projects that improve the built environment. Ferrell is a past president of the American Society of Civil Engineers (ASCE) and the Women's Transportation Seminar (WTS). She currently serves as Chair of ASCE's California Infrastructure Symposium where she organized the first ever three-day event to bring together over 400 engineers focused on California specific infrastructure and policy issues with keynote speakers, presentations, technical tours and networking opportunities. In 2018, she was the recipient of the WTS International's Member of the Year Award. She can be reached at 442-339-2558.



PAZ GOMEZ
 Deputy City Manager, Public Works
 City of Carlsbad

Paz Gomez is Deputy City Manager, Public Works for the City of Carlsbad. She is responsible for Transportation, Utilities, Fleet & Facilities, Environmental Sustainability, and Construction Management and Inspection for the city. Gomez is a registered Professional Engineer. Certified Energy Manager, Green Building Engineer and Certified Public Manager. She received her B.S. in Civil Engineering from San Diego State University; M.S. in Civil Engineering from Stanford University; and M.S. in Management from Troy University. She is also a member of the American Public Works Association (currently President of the San Diego and Imperial Counties Chapter), American Society of Civil Engineers, Association of Energy Engineers, and League of California Cities Public Safety Policy Committee. She has also worked for the City of San Diego, URS/AECOM and served in the U.S. Navy Civil Engineer Corps retiring as Captain.



CANDACE L. GRAY
 Production Engineering Manager
 ASML

Candace Gray is a Production Engineering Manager at ASML. She is responsible for securing factory output and ensuring quality products are shipped to customers. She is the president of the San Diego County Section of the Society of Women (SWE) Engineers with over 350 members. In 2022, Gray served on the boards for the San Diego Section of SWE and the National Society of Black Engineers (NSBE) professionals. Gray is an advocate and role model for engineering. She has contributed numerous hours towards engineering outreach and professional development to attract and retain women and girls in the fields of engineering. She is part of the ASML WAVES board (Women Achieving Vocational Excellence and Success), an employee network with the missions to promote and support professional development, networking, work-life balance, and sense of community for women and allies.



CLAUDIA GUTIERREZ
 Engineer
 Turner Construction Company

Claudia Gutierrez is an engineer with Turner Construction Company, working on the Campus at Horton project in downtown San Diego, one of the largest redevelopment projects in the country. The project will convert the existing mall into 300,000 square feet of life science tenant space, 400,000 square feet of creative office space and 300,000 square feet of retail space. The project is targeting LEED Platinum and WELL Platinum certification. Gutierrez began her career in Turner's Los Angeles office as a field engineer on the LAX Midfield Satellite Concourse aviation project, a joint venture that added a multi-level, 700,000-square-foot concourse to the airport. Gutierrez earned a bachelor's degree in civil engineering from the University of Arizona and volunteers at Turner recruiting events aimed at interesting college students in careers in construction management and engineering.



HARMONY HODGES
 Engineer
 Turner Construction Company

An engineer for Turner Construction Company, Harmony Hodges is working on the largest mixed-use waterfront development in San Diego, IQHQ's Research and Development District (RaDD). She earned a bachelor's degree in civil engineering from San Diego State University and has contributed to multiple award-winning projects, including the Innovation Middle School and the California State University San Marcos Extended Learning Building. She participates in Turner's mentorship program and is active with the Future Leaders Group and Professional Women's Group. Hodges has stepped up to plan numerous events for the IQHQ RaDD project team and the San Diego office. She championed Turner's participation with the San Diego Pride Parade and rallied staff to create 1,000+ hygiene kits for San Diego Rescue Mission. She also partnered with the USO to donate bicycles to children of deployed service members.





KELLY HON
Sr. R&D Manager
Becton Dickinson

Kelly Hon is a Senior R&D Manager at Becton Dickinson (BD), a global medical technology company, where she is a bold and strategic leader. In 2022, she drove innovation with two new patent applications granted for medical devices. Hon is not only a STEM professional but also a STEM ambassador. She completed her second term as President of the San Diego Professional Section of the Society of Women Engineers (SWE-SD) in 2022. She led 11 committees supporting over 50 events across student outreach, professional development, and member engagement while also raising over \$15,000 for scholarships. Hon was recognized by her company as one of six “Life Changers” and by San Diego Magazine as the “Woman of the Year” for making a lasting impact on those around her through what she does at work and outside of work.



REBECCA HYNES
Manager of Integrated Logistics
Services
General Dynamics NASSCO

Rebecca Hynes is Manager of Integrated Logistics Support at General Dynamics NASSCO. She brings more than a decade of diversified engineering and construction expertise to her role. She specializes in resolving complex technical issues that often affect multiple conflicted stakeholders. As such, Hynes serves a vital role during the concept, contract, functional, detail design, and construction of a wide range of ships for the U.S. Navy and various private industries. This past year, she supported the successful delivery of the U.S. Navy’s newest fleet replenishment oiler, USNS John Lewis (T-AO 205), and expects to see the completion of at least two more vessels of that class this year. She also is in the process of reinventing and reinvigorating the logistics support processes that keep military sealift command ships available and operational. She can be reached at rebecca.hynes@nassco.com.



MARY “DR. MIMI” ISAAC
Program Director/SWE Fellow
AAUW California Tech Trek & SWE

Mary “Dr. Mimi” Isaac is Program Director of American Association of University Women (AAUW) Tech Trek and a Society of Women Engineers (SWE) Fellow. Following a distinguished career in the energy industry working for GE, Isaac retired to enroll in grad school, intent on conducting research to explore middle school girls’ interest in engineering or technology as possible fields, and to peel back the effects that role models may be having on students’ interest. She earned her Ph.D. in STEM education from Old Dominion University in 2015 at the age of 60. She is a passionate practitioner and researcher interested in improving female engagement and retention in engineering and technology through formal and informal communities of practice such as AAUW, SWE, FIRST, ITEEA, and ASEE. She can be reached at drmmimibonkisaac@gmail.com.



XUN JIA
Director of Engineering
Stok

Xun Jia is Director of Engineering at Stok, a team of interdisciplinary experts in sustainability that delivers high-performance solutions to exceed ambitious building sustainability goals. With nearly two decades of experience, she specializes in performance-based energy efficiency analytics prioritizing occupant health and wellness, asset decarbonization strategies, and smart buildings. Her thoughtful and expert insights have elevated sustainable projects across San Diego and nationwide. As the project manager for the County of San Diego’s electrification initiatives, Xun has been a pioneer in local building electrification efforts for the past five years. Her efforts aim to support the County of San Diego—the largest county in the U.S. to commit to zero carbon emissions by 2035. She is a thought leader and enthusiastically shares fresh insights to help move the building industry forward. She can be reached at xun@stok.com or 347-714-4226.



DEBRA KIMBERLING
President
San Diego County Engineering Council

Debra Kimberling is President of the nonprofit San Diego County Engineering Council and fellow of the Society of Women Engineers (SWE). She has advanced the collaboration of the local engineering society sections and is working with a team of historians and volunteers to increase the web presence of engineering pioneers and role models. Kimberling is the founder of the SWE Legends project and has been recognized as a SWE Diversity Champion. As council president, she oversees the hosting of the San Diego Engineers Week Awards Banquet. This year, Kimberling accepted the American Institute of Aeronautics and Astronautics San Diego “Outstanding Corporate Contribution to the Community” Award on behalf of the council and was the 2023 International Women’s Day keynote speaker at a local international company presenting the “Unwritten Rules for Career Success.”



Transforming STEM Dr. Karen May-Newman

Congratulations to Dr. Karen May-Newman for being a Woman of Influence in Engineering.

For 25 years, she has inspired and trained hundreds of women to become bioengineers.

With her guidance, SDSU is advancing impactful biomedical, sustainability and climate justice projects.





SHERRY KIRKPATRICK
President & CEO
SRK Engineering, Inc.

Sherry Kirkpatrick is Founder, President, and CEO of SRK Engineering, Inc. She is a licensed Civil Engineer in the state of California and has over a decade of experience managing water and sewer capital improvement projects and developments. In the seven years she has been a General Engineering contractor, she has completed over \$100 million in heavy civil engineering work including utilities, storm drain, and retaining walls in Southern California. SRK is one of the largest Disadvantage Business Enterprise subcontractors on the Mid-Coast Trolley Project that brings the Red Trolley from Old Town to UTC. With her team, the SRK Engineering Riders, Kirkpatrick fundraised just under \$80,000 for the 2022 Bike MS Bay to Bay ride in San Diego. She can be reached at skirkpatrick@srkeng.com and 760-294-4012.



KATHLEEN A. KRAMER, PH.D.
Professor of Electrical Engineering
University of San Diego - Shiley
Marcos School of Engineering

Kathleen A. Kramer, Ph.D., is a professor of Electrical Engineering and a founding faculty member at the USD Shiley Marcos School of Engineering. She is a leader in engineering accreditation criteria activities for both IEEE and ABET. As a member of the ABET Engineering Accreditation Commission 2015-2022, Kramer has contributed to several significant advancements in the criteria, including ones to address diversity and inclusion, and new program criteria in mechatronics and cyber security. As 2023 IEEE Ad Hoc on Innovating Funding Models chair, Kramer is shepherding a large cross-IEEE global committee that is developing innovative funding models to better advance key IEEE activities related to technical interests and the public interests, key to education and policy, with high impact to the IEEE mission to advance technology for humanity.



JACQUI LE
Project Manager/Engineer
KPFF Consulting Engineers

Jacqui Le is a Project Manager and Engineer with KPFF Consulting Engineers, a multi-disciplinary firm engineering extraordinary, community-centric spaces across San Diego. She is a trailblazer in structural engineering who is committed to creating spaces and opportunities for diverse professionals to thrive. An industry-leading project manager and engineer in KPFF Consulting Engineers' San Diego office, Le not only shapes extraordinary public spaces throughout San Diego County, but also empowers rising professionals in engineering to mold the industry's future. She is managing the Correia Middle School renovation project, which includes a new building, extensive renovations and seismic retrofits, as well as upgrades to the school's auditorium. She is also leading an extensive renovation project for BioMed Realty that will transform a former exotic car dealership into a highly desirable lab space.



VIRGINIA LU
Director, Advanced Technology Development
Tandem Diabetes Care

Virginia Lu is the Director of Advanced Technology Development at Tandem Diabetes Care where she is dedicated to improving the lives of people living with diabetes. Throughout her career, Lu has demonstrated a passion for problem solving and established herself as a go-to resource for all levels within the organization. She is a skilled product leader who innovates with the R&D teams to create solutions for the diabetes community. In FY 2022, Lu was an inventor with nine patent applications filed - the most from a single person at the company - and had a care partner application design patent granted in 2023. She was also a key contributor to the \$216 million acquisition of AMF Medical Company, the largest acquisition Tandem Diabetes Care has ever executed. She can be reached at vlu@tandem-diabetes.com or 858-401-1587.



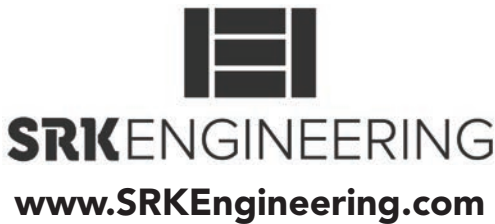
KAREN MAY-NEWMAN
Executive Director for STEM Teaching, Learning and Innovation
San Diego State University

Karen May-Newman is the Executive Director of STEM Teaching, Learning and Innovation and a Professor of Mechanical Engineering at San Diego State University. She has over two decades of academic experience and more than 50 peer-reviewed journal publications in the field of bioengineering. Her research is focused on the interaction of cardiovascular medical devices with the human body and has been funded by numerous grants. May-Newman has nurtured a pipeline of female students for engineering degree pathways for over 20 years. She has created numerous outreach programs for K-12 students and teachers, university students, and the general public. May-Newman founded the SDSU Bioengineering Program which doubled the number of female MS graduates from the department. May-Newman was the first and only female department chair of SDSU Mechanical Engineering and has served as a pioneer for women in engineering.



Congratulations to the President of SRK Engineering,
Sherry Kirkpatrick, for being recognized as
a Women of Influence in Engineering!
Her amazing team has constructed over \$100M
in heavy civil engineering work.

SRK Engineering is a certified DBE, WBE, SB-PW, LBE and 8a General Engineering Union Contractor that specializes in the construction of retaining walls and underground infrastructure. We are dedicated in helping our clients achieve success project by project.
Contact us to meet your project goals.





JENNA METERA

Chair
American Society of Materials
San Diego Chapter

Jenna Metera is the Chair of the San Diego chapter of American Society of Materials (ASM). The ASM chapter offers technical materials courses, training and support for the professional and collegiate community. She is a technical leader who has implemented the financial and technical justification portions of the CAPEX process after the corporate acquisition was complete (Integrated Microwave Corp. acquired by Knowles Precision Devices) to make pivotal equipment purchases that dramatically streamlined and optimized several production processes on the manufacturing floor. Metera is also active in The Minerals, Metals, & Materials Society, the American Ceramic Society, the European Ceramic Society, and the Young Ceramists Network. Her Ph.D. research at UC San Diego focuses on the chemical synthesis of morphology-controlled oxide ceramics for electrical applications. She can be reached at jennametera@gmail.com or 607-821-9057.



DR. TRACY NGUYEN

SWE San Diego Vice President/Doctor of Optometry
Society of Women Engineers/Essential Eyecare
Optometry

Dr. Tracy Nguyen is Society of Women Engineers (SWE) San Diego Vice President and a Doctor of Optometry at Essential Eyecare Optometry. She is a champion of STEM Diversity on a mission to be a catalyst to closing the gender gap in STEM fields through her support and mentorship of young women and underserved students. Although a practicing optometrist, she is an enthusiastic outreach advocate and SWE's strongest advocate who wholeheartedly embraces SWE's mission and vision of empowering women to reach their full potential in engineering careers and achieving parity and equity. In her free time, she is often a passionate speaker at events and conferences; organizer of SWE outreaches; and volunteers at FIRST Robotics events to empower under-served youths as future engineers and innovators. She can be reached at drtnnguyen2@gmail.com



LAMIA N. PORTER

Lead Estimator
Sundt Construction

Lamia Porter is the lead estimator for Sundt Construction. A graduate of Montana Technological University with a bachelor's degree in civil engineering, she compiles and monitors project budgets throughout the design process. She continuously updates clients on any changes in costs and potential savings. A 10-year veteran of the construction industry, Porter has worked on several San Diego Unified School District projects, including Emerson Bandini Elementary School, Morse High School, Marston Middle School and Gompers Academy. She was involved in other aspects of preconstruction including constructability, value engineering and procurement. Porter was one of two estimators that led preconstruction efforts for the California State University Fullerton student housing project. This project had significant budget pressures and Porter helped get it back on budget. Porter led the estimate for the renovation of the George Bailey Detention Center.



SORAYA PURDY

Project Engineer
Turner Construction Company

A project engineer with Turner Construction Company, Soraya Purdy began her career in construction in 1995, and started with Turner in 2004. During her time with Turner, she has worked on several prominent projects including the expansion of the San Diego Convention Center, the House of Blues, Semptra Energy headquarters and the new San Diego Central Library. Purdy is the project engineer and project manager on the new Terminal 1 at San Diego International Airport, a \$2.6 billion redevelopment project. Purdy is active in Turner's Women's Network, whose mission is to empower and elevate women in construction. She also serves as a mentor within Turner's mentorship program. She has been a role model in the industry. Purdy earned a bachelor's degree in business from the University of Arkansas Fayetteville.



"In a profession with so few women, it can sometimes feel isolating. SWE San Diego provides a community where female engineers can come together, support one another and make a difference. Join us."

Candace L. Gray, President

COMMUNITY GIVING BACK OUTREACH SWENEXT



INSPIRATION SPEAKERS PROFESSIONAL DEVELOPMENT



NETWORKING OPPORTUNITY CONNECTION FUN



www.SWESanDiego.org



DANIELLE RICHTERKESSING
Director, Global Product Development
NuVasive

Danielle RichterKessing is Global Product Development Director at NuVasive. She has spent her entire R&D tenure of 15 years in the spine industry. Leading 15 engineers on the primary NuVasive enabling technology, the Pulse platform, she has been essential in supporting the system releases for the past three years. She is well-rounded in spine technology development, beginning her career in posterior fixation instrument and implant system development prior to transitioning into enabling technology. Outside of her R&D responsibilities, She is an active leader for NuVasive's employee resource group, Women In NuVasive (WIN). As a WIN advisory board member, she advises on the direction of the organization, supporting over 650 members in advancing their skills through connection and education. Outside of NuVasive, she has been a part of the Society of Women Engineers.



JUSTINA A. SANCHEZ
Quality Engineer
TÜV SÜD America Inc.

Justina Sanchez is Quality Engineer at TÜV SÜD America Inc. She has been in the Testing, Inspection & Certification industry for the last 18 years. She was a Safety Engineer for 11 years and is now a Quality Engineer auditing labs across North America. She volunteers her time and service with the Society of Women Engineers (SWE) and the Society of Hispanic Professional Engineers (SHPE) as a role model for our next generation of engineers. On International Women in Engineering Day, June 23, 2023, she will be releasing a book she wrote titled "Extraordinary Engineers - Female Engineers Of This Day and Time." Sanchez has been a positive influence for women in engineering all throughout her career and continues to dedicate her time being an advocate for women in engineering. She can be reached at Justina.sanchez@tuvsud.com.



MELISSA STAYNER, PG, CEG
Senior Engineering Geologist
NOVA Services, Inc.

Melissa Stayner is Senior Engineering Geologist at NOVA Services, Inc. She specializes in fault rupture hazard and liquefaction hazard investigations and has completed three ground rupture hazard investigations in downtown San Diego this year. She has led NOVA's efforts in providing site-specific ground motion hazard analyses now required by the 2019 California Building Code Update. She has worked on major projects in San Diego County, including the City of San Diego Fire Station 52 where the site had to be cleared of active faulting prior to construction, the University of San Diego Wellness Center and Basketball Practice Facility, and the San Diego International Airport Terminal 1 Parking Plaza. She also worked on the Rancho Bernardo Transit Center Affordable Housing Project for Affirmed Housing, which included the evaluation of existing landslides.



ELIZABETH SUAREZ
Project Manager
Turner Construction Company

With 11 years of experience, Elizabeth Suarez has consistently demonstrated exceptional leadership skills as a project manager for Turner Construction Company, overseeing multiple projects simultaneously. Whether leading projects or mentoring junior staff, she has a rare ability to inspire and motivate her team to achieve greatness. Her collaborative approach has resulted in the successful completion of complex projects and the development of innovative solutions to challenges. Her exceptional multitasking abilities resulted in the seamless coordination of efforts across all projects. Suarez volunteers as a teacher and advisor in Turner's School of Construction Management, helping small- and minority-owned construction businesses understand the intricate details of the project start-up process. She participates in Turner's Future Leaders Group and Women's Network events. Suarez earned a bachelor's degree in construction management from California State University Sacramento.



kpff

honors
JACQUI LE
and all of
San Diego's
Women of
Influence in
Engineering



Thank you for
your inspiring
impact on the
community
and our next
generation of
engineers.

Congratulations, Jacqui!

www.kpff.com

Latitude 33 Planning & Engineering

Congratulates

VANESSA BOLLES

on her selection as a 2023 honoree for
San Diego Business Journal's
Women of Influence in Engineering.

We congratulate all of the honorees on their achievements
as outstanding engineering leaders.



latitude 33
PLANNING & ENGINEERING



DR. JULIA TAYLOR
President
Taylor Success Systems

Dr. Julia Taylor works as a Management Consultant with Taylor Success Systems, which she has done since 2005. Her most compelling projects help high technology companies with Systems Thinking and implementing innovation. She brings an objective perspective to engineering and management challenges and works with CEOs and managers to provide a tailored approach to each project. Taylor is the president-elect for the International Council on Systems Engineering (INCOSE) San Diego Chapter. She has a doctorate degree in corporate strategy from Alliant International University, an MBA from Santa Clara University, a B.S. in chemistry from Memphis State University, and an electronics degree from Heald Institute of Technology. She has written papers on technology management, team building, and the systems approach and has authored three books. She can be reached at drjulia@taylorssuccesssystems.com



CECILY TAYLOR
Senior Transportation Planner
San Diego Association of Governments (SANDAG)

Cecily Taylor is Senior Transportation Planner at SANDAG. She is managing the 2025 Regional Transportation Plan network development to identify the region's long-range transportation projects, as well as the Purple Line Conceptual Planning that will advance the region's next major transit rail project. Taylor developed the SANDAG Request for Proposals for the Mobility Technology Planning and Design On-Call to identify qualified consultants to support SANDAG's future intelligent transportation system (ITS) planning needs. In 2022, she organized and presented in a panel session at the 2022 ITS World Congress highlighting San Diego regional efforts to plan and pilot transportation technology. Taylor is the 2023 WTS-San Diego chapter president, a professional organization attracting and advancing women working in the transportation field. She was also selected 2022 WTS-San Diego Member of the Year. She can be reached at cecily.taylor@sandag.org.



MICHELLE THOMPSON
Founder and CEO
Open Research Institute, Inc.

Michelle Thompson is the founder and CEO of the nonprofit R&D Open Research Institute (ORI). She is responsible for amateur satellite service regulatory reform and sits on the FCC Technological Advisory Council. Thompson also directs the Haifuraiya open-source high-earth orbit communications satellite project. This is the first open-source HEO/GEO design in the world. This broadband microwave design uses large field programmable gate arrays for digital signal processing, open protocols, and world-class forward error correction. She is also chair of the San Diego Section of the Institute of Electrical and Electronic Engineers (IEEE). She founded the Information Theory Society and Open Source Digital Radio local group. She also organized the Ribbit project, an open source OFDM-based digital protocol for emergency communications that leverages any radio for tactical communications. She can be reached at michelle@gmail.com or 858-229-3399.



VANESSA TOLENTINO-TARRONAS ESLAVA
Assistant Transportation Engineer
TYLIN

Vanessa Tolentino-Tarronas Eslava, EIT, is an Assistant Transportation Engineer at TYLIN in the Rail and Transit Section with expertise in land development and transportation engineering. She has completed several projects including the Project - El Portal. She is also very active in the American Society of Civil Engineers and served as the President of the Younger Member Forum in 2021-2022 and is currently the Director for ASCE representing YMF. For her contributions to the organization, including her outstanding community service including chairing Engineering Day at the Mall, she has been recognized as an ASCE New Face of Engineering. She has also been recognized as an engineering role model and social media celebrity through her lighthearted posts showcasing a positive outlook for engineers. She can be reached at vanessa.eslava@tylin.com.



AMY LYNN WILLIAMS, PE
Water Resources Engineer
Dudek

Amy Lynn Williams, PE, is a Water Resources Engineer with Dudek's Hydrology and Hazardous Waste group working on sediment management planning, water quality monitoring, and groundwater planning. Recent career accomplishments include completing the 2022 and 2023 Annual Reports for the Santa Monica Groundwater Sustainability Plan, a Sustainable Groundwater Management Act (SGMA) requirement. She developed a sediment management plan for the lower Tijuana River and Estuary, which spills across the U.S.-Mexico border. She also passed the California Specific Civil Exams (Engineering Surveying and Seismic Principles) for the Professional Engineer licensure in the state. Williams began her career in the U.S. Army Corps of Engineers as a DoD SMART Scholar, working on large infrastructure projects. She holds degrees in Civil Engineering from the University of Arizona and UC Berkeley. She can be reached at alynn-williams@dudek.com or 760-479-4850.



LOIS YU
Associate Director
The Aerospace Corporation

Lois Yu is an Associate Director at the Aerospace Corporation, a federally funded research and development center. There she leads a department that provides mission assurance support for national security space programs. In 2022, she was the Aerospace on-site lead for a multibillion-dollar military satellite program in San Diego, managing contributions of over 70 Aerospace engineers. In 2021, she was an engineering subcontract program manager and lead reliability engineer for GPS, which provides free, open, and dependable services to hundreds of applications affecting every aspect of modern life. Yu is also an advocate for science, technology, engineering and math careers for girls and a proud alumna of UC San Diego where she was the inaugural chair of an industry outreach board and a UC San Diego 2022 True Triton Honoree. She can be reached at yulois@yahoo.com or 619-807-2167.



KATHARINE ZIMMERMAN
Supervisor of Systems Engineering
General Dynamics NASSCO

Katharine Zimmerman is Supervisor of Systems Engineering at General Dynamics NASSCO, where she brings almost a decade of diversified engineering and construction expertise to her role. Having worked in all three areas of lead-in design, she specializes in the initial design of nautical vessels for USN ships capitalizing on commercial standards. At the forefront of modern engineering methods, she leads some of the most complex and challenging system engineering efforts in her field. This past year, Zimmerman managed extensive redesign efforts for the Navy's ESB program to meet government cost modification requirements, leading NASSCO to secure ship contracts for vessels 6-8. She also led a performance improvement initiative that saw such a boost to employee satisfaction and productivity that NASSCO was able to shoulder a new contract's workload without hiring additional engineering support. She can be reached at 442-339-2558.



LAURA ZUILL, PE
Senior Engineer, Civil Engineering
Coffman Engineers, Inc.

Laura Zuill, PE, Senior Civil Engineer with Coffman Engineers is a licensed civil engineer with over 11 years of experience working in San Diego County. Her project experience encompasses life science, K-12 and higher education (DSA), single and multi-family residential, commercial, recreational, alternative energy, and healthcare facility (HCAI) project types. She has successfully managed the design of over \$1 billion of new construction projects in San Diego and Southern California. As the second employee in Coffman Engineers' San Diego civil engineering department, she has helped grow the group from two in 2021 to 13 in 2023. When Zuill isn't engineering San Diego's complex infrastructure, she is volunteering with GenerateHope, a local non-profit focused on serving the needs of human trafficking survivors. She can be reached at laura.zuill@coffman.com or 619-488-6266.

